



# EDF-Myanmar

8<sup>th</sup> October 2021

## Thanks to all EDF-Group Members



# Background of EDF-Myanmar



1 Mr. Tajima survived as a Japanese soldier in Burma during the 1943 World War II.

2 He published a book called "As a Survival on the Burmese Front," published May 25, 2011.



3 Mr. Tajima first met Akio San around in 1983. And then while he was working at Meguro UNESCO, Meguro UNESCO is also a donor of EDF-J. So, They met again . At that time, he explained to Akio San his small activities in Myanmar and he told Akio San to take care of his activities in Myanmar.

A) He donated a total of 130,000 yen for the sale of his book and another 50,000 yen, totalling 180,000 yen to EDF-J.

B) With that, EDF-J set up "Tajima Memorial Scholarship" with his money.

4 He passed away in 2012.

5 In 2012, a scholarship project was launched at Kyaung Kone School in Htantabin Township, Myanmar, and EDF M was formed.

6 At that time, activity for the Burma side was a charge of Sai Non-Nutt San.

## Survey for EDF- Myanmar

### □ From EDF-Thai

- × Ms. Charuwat Boossamalee
- × Ms. Pavana Poolsawat

### And From Myanmar

Sai Non Nutt San did the survey for EDF-M below the objectives

- × Visiting Myanmar to find the appropriate schools to grant scholarships
  - × Survey about the overall conditions in Yangon and the rural area of Myanmar if able to
  - × set up management office to start the scholarship project
- ❖ Area of Survey 3 Schools:
- × Kyaungkone School
  - × Aye Ywe Lay School
  - × Htainnitpin School

- ❖ In November 2012 EDF-I had EDF group CEO meeting at Vientiane
- ❖ Nutt San was invited as representative of EDF-M (after conference we resigned EDF-M)
- ❖ At that time , Mr Shiraki form The Nippon Foundation suggested about
- ❖ Salary, Office , Advertising newspaper and also introduce Mrs Michiko San and she recommended Nyi Nyi San
- ❖ In 2013 Akio San, Sunphet San and Shirki San held interview with 11 candidates at Yangon for EDF –Myanmar
- ❖ The very first interviewee was Nyi Nyi San and his English is very good and his qualification and work background was good enough for EDF –Myanmar.
- ❖ So , he was the very first Managing Director of EDF-M
- ❖ And then, he chose Ms. Wut Yi Lwin for his assistant
- ❖ But she did not work long time and quitted

- ❑ Yin Yin Phyu
- ❑ General Manager
- ❑ Joined EDF- Myanmar in 2<sup>nd</sup> August , 2015

- ❖ At that time, Nyi Nyi San was the Managing Director. we had a small office near downtown. After one year later, we moved to another place that the rental charges was cheaper than original place. After working together with Nyi Nyi San for about one year, he quitted EDF- Myanmar in April 2017.
- ❖ Yin Yin became the only one person of EDF- Myanmar . I faced a lot of problems between the schools, teachers and the parents and government officials and also the bank because we didn't still get the INGO registration. So, the negotiation and implementation of the project was very difficult.
- ❖ Another big problem was the money transfer to Myanmar. There was no organization account because we didn't get the INGO registration. That was a big problem of EDF- Myanmar at that time.



- ❑ Zin Zaw Zaw Maung @ Zaw Zaw  
Director of YellowLink Co.,Ltd

- ❑ Managing Director

- ❑ Joined EDF- Myanmar in June 2019

- ❖ After Zaw Zaw Joined the EDF- M and we tried to get the INGO registration.

- ❖ we tried to set up the EDF-Myanmar to be a official INGO in Myanmar.

- ❖ We also had a new BOD members

# EDF-MYANMAR ORGANIZATION CHART

## EDF MYANMAR BOD Member List



President (ဥက္ကဋ္ဌ)  
Mr Terumasa Akio  
The Founder of EDF Group



Managing Director  
U Zin Zaw Zaw Maung @ Zaw Zaw  
Director of YellowLink Co.,Ltd



Director  
Mr Sunphet Nilrat  
(The Managing Director of EDF-Thai)



Director  
U Thant Zin Oo  
Deputy Managing Director of  
Shwe Than Lwin Co.,Ltd



Director  
U Nay Oke  
Chairman of Nay Education  
Foundation



General Manager  
Daw Yin Yin Phyu



Office Staff  
Daw Yu Wati Lwin





- ❑ Mr. Terumasa Akio  
The Founder of EDF Group  
President
- ❑ U Zin Zaw Zaw Maung @ Zaw Zaw  
Director of YellowLink Co.,Ltd  
Managing Director
- ❑ Mr. Sunphet Nilrat  
(The Managing Director of EDF-Thai)  
Director
- ❑ U Thant Zin Oo  
Deputy Managing Director of Shwe Than Lwin Co.,Ltd  
Director
- ❑ U Nay Oke  
Chairman of Nay Education Foundation  
Director
- ❑ Daw Yin Yin Phyu  
General Manager
- ❑ Daw Yu Wati Lwin  
Office Staff

- ❑ In 2020 January , we signed the MOU with the Ministry of Education.



- ❑ Yu Wati Lwin
- ❑ Finance Assistant and Office Staff
- ❑ Joined EDF-Myanmar in May 2020

- ❖ After Yu Joined the EDF , We opened a small office again. Yu is the in charge of EDF-Myanmar Finance.
- ❖ Finally , We officially got the INGO registration in 2020 December.
- ❖ After we got the INGO registration, we can open the organization account of EDF-Myanmar.

Here is the INGO Registration of EDF-Myanmar



- ❖ In 2020 ,we increased new project area Thanlyin because of the supporting of the Kumatanigumi Construction Group .So, we have 3 project areas now.



# EDF-Myanmar Scholarship Procedure

Step1. Application forms must be copied and sent to schools by mid-May.



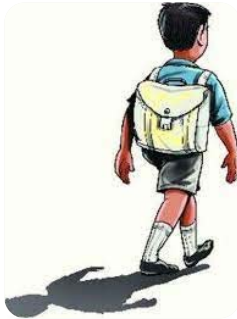
Step3. Student applications must be picked up from schools by the end of June.



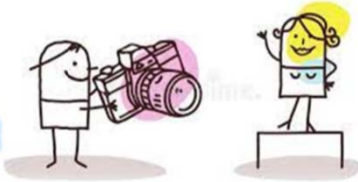
Step5. When we get the application forms and student photos from the schools, EDF-M staff fill in the student information to the EDF Inter Cloud.



Step2. Fill the application form at the school side and report to EDF side the list of dropouts student.



Step4. Student photography will begin early in July.



Step6. After filling students information, wait for Thai side activity of matching Donors and students.



Step7. During that time, visit to students' home frequently. Meeting with teachers and discuss about the project and ceremony



Step9. To submit a report back to Japan about students' conditions, their families' conditions, From schools' report.



Step8. After the result of confirmed students is out, contact to schools, cooperate with respective schools to give scholarship to students.

# Method of providing Scholarship





- ❖ We provide the scholarship in cash. We celebrate Scholarship Awarding Ceremony each school and we invite some of the township administrative person, township education officer and parents.

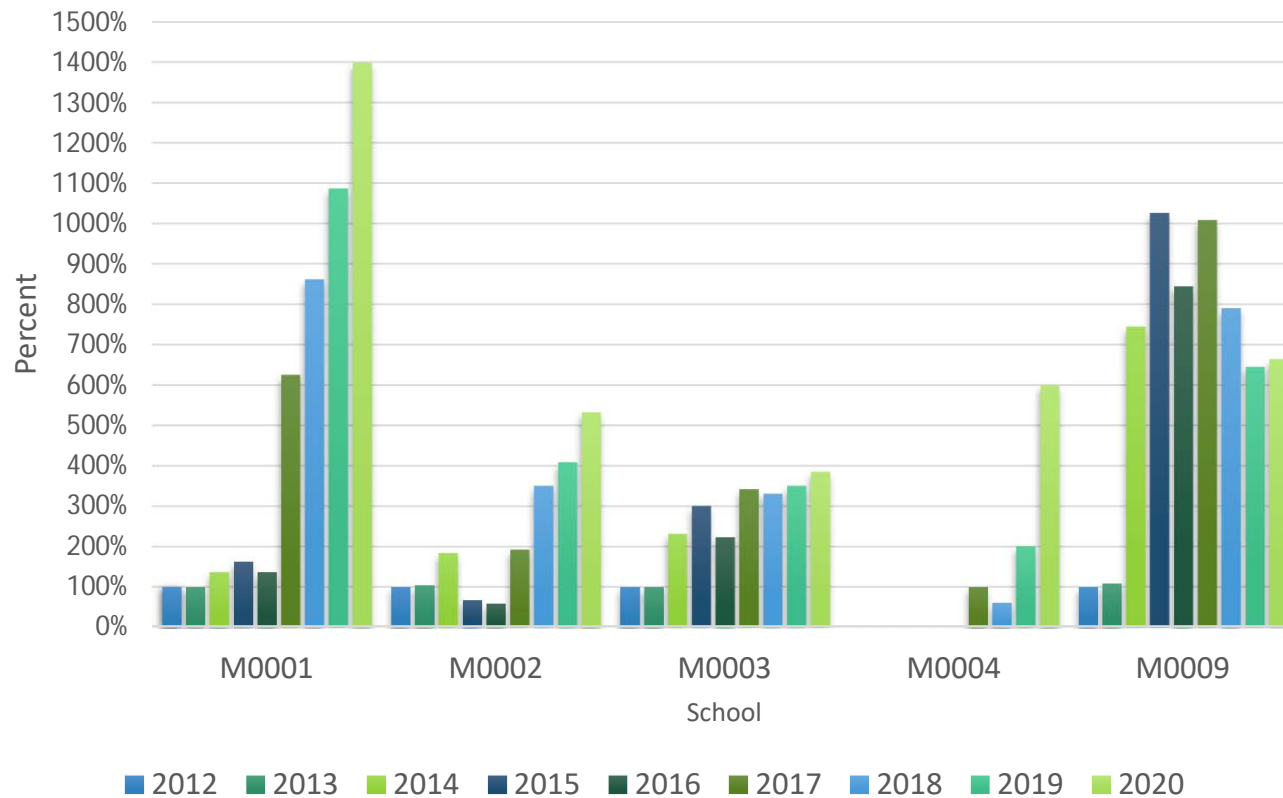




# Comparison of the total scholarship between academic Year 2012-2020

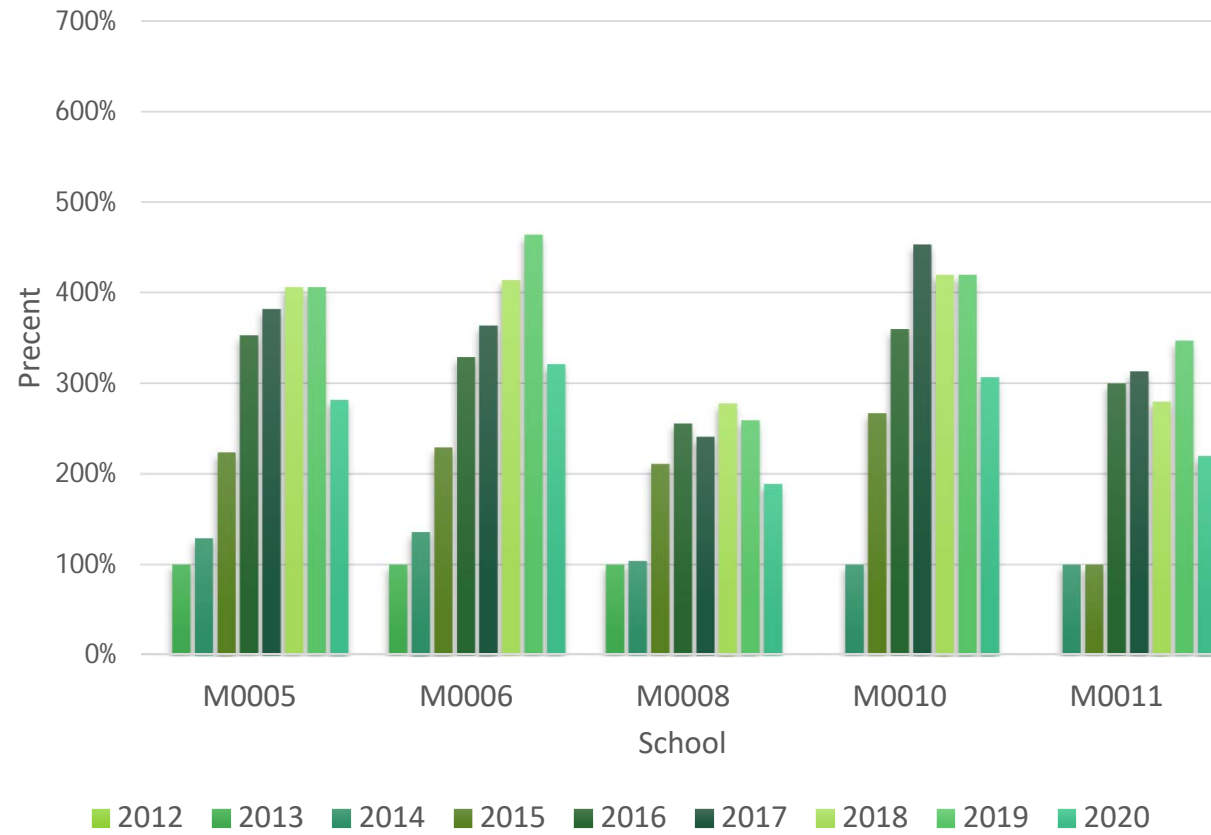
## Htan Ta Pin

Comparison Chart



# Kyauk Tan

## Comparison Chart



## Other project

- ❖ 2017 March Computer Donation Project by Tokyo Lion Club in Htantapin Township. This was very useful donation project for children. In Myanmar, most of the schools don't have any computer room for students. So, the students don't get a chance to study computer. According to the TLC computer donation project , we can fill up one of the basic needs of Myanmar education .



## Social Media (Join Us and be the change)

- ❖ 1. In 2020, we also created the EDF Myanmar Website and Facebook Page.



<http://edfmyanmar.org/>



<https://www.facebook.com/EDF-Myanmar>

- ❖ 2. By creating Website and Facebook page, it is intended to connect and support to the school all around Myanmar which is really necessary in Education.
- ❖ 3. In later years, the selection of the new schools and new students will be available by online.

## EDF-M Future Plan

- 1) To provide scholarships to more than 5,000 students within 3 years.
- 2) To provide scholarships to poor children in border areas and mountainous areas.
- 3) To implement other projects in scholarship schools.
- 4) The scholarship project will be more effectively.

**Thank you for your attention**